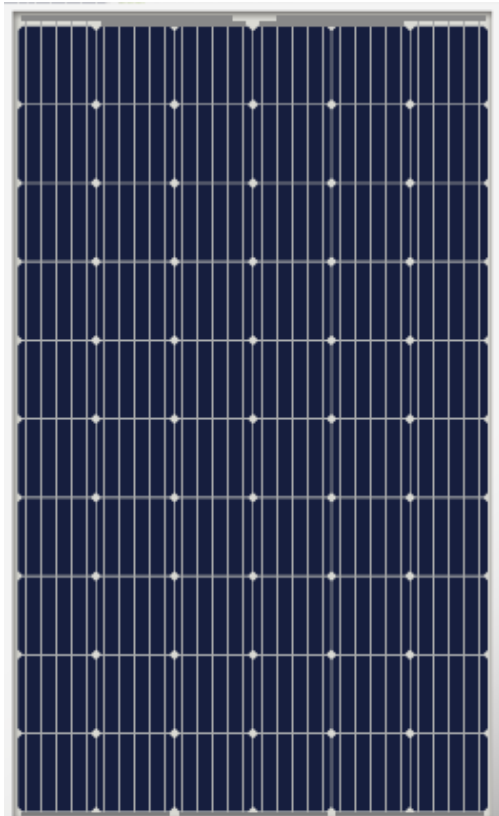




www.hespv.ca

HES-285M // 285Wp // 60-Cell Mono-Crystalline Solar Module



POWER EXCELLENCE

The HES-285M module guarantees a positive output tolerance on every module from [0 - 5%]

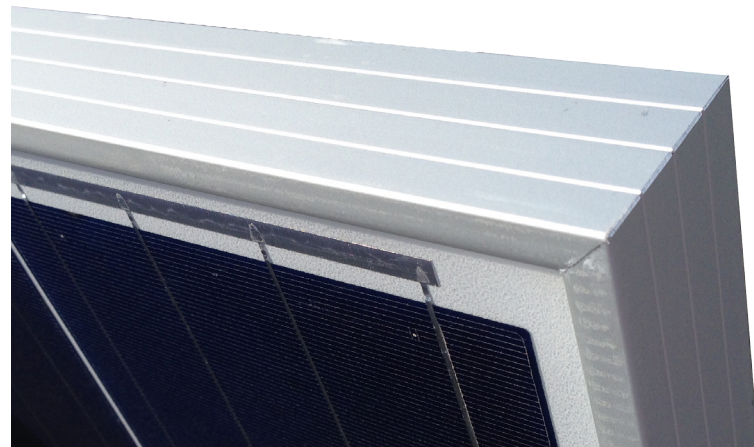
HIGH-QUALITY COMPONENTS

HES modules are made by a Tier 1 global manufacturer, offer superior efficiency, & stringent quality control.

RELIABLE

25 Year Linear Performance Guarantee
10 Year limited warranty on material & workmanship.

HES-285M solar modules are made using only the highest quality mono-crystalline solar cells, designed and manufactured by industry leading suppliers. High transmission glass is used to take advantage of increased light diffusion and snow-shedding abilities. Finally, anodized aluminum frame creates a rigid body to support the module in any application, residential/commercial rooftop to utility scale ground mount, and tracking systems.



CONTACT YOUR HES PV SOLAR PROVIDER TODAY



www.hespv.ca

HES-285M // 285Wp // 60-Cell Mono-Crystalline Solar Module

ELECTRICAL CHARACTERISTICS

Max Power (Pmax)	285 W
Tolerance of (Pmax)	[0 ~ 5%]
Type of Cell	Mono-Crystalline
Cell Configuration	60 in series
Open Circuit Voltage (Voc)	39.1 V
Maximum Power Voltage (Vpm)	31.3 V
Short Circuit Current (Isc)	9.62 A
Maximum Power Current (Ipm)	9.11 A
Module Efficiency *	17.07%
Maximum (DC) Voltage	1500 VDC
Series Fuse Rating	20 A
NOCT	46°C ±2
Temperature Coefficient (Pmax)	-0.37%/C
Temperature Coefficient (Voc)	-0.292%/C
Temperature Coefficient (Isc)	+0.045%/C

STC - Standard Test Conditions: Irradiation 1000 W/m2 - Air mass AM 1.5 - Cell temperature 25 °C

* Calculated using maximum power based on full positive output tolerance [-0: +5] Wp

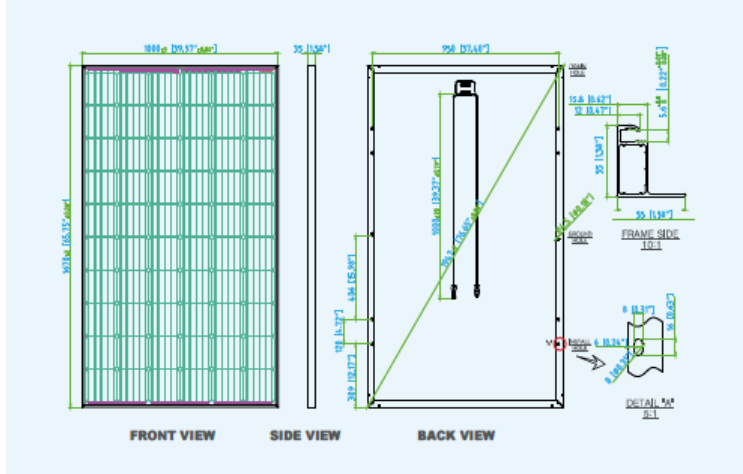
MECHANICAL CHARACTERISTICS

Dimensions (W x H x D)	39.37" x 65.75" x 1.38" 1000 x 1670 x 35 mm
Cable	1000 mm / 39.37"
Output Interconnect Cable	MC4 type connectors
Weight	18.9 kg / 41.7 lbs
Max Wind Load / Snow Load	2400Pa / 5400Pa
Operating Temperature	-40 to 85° C -40 to 185°F

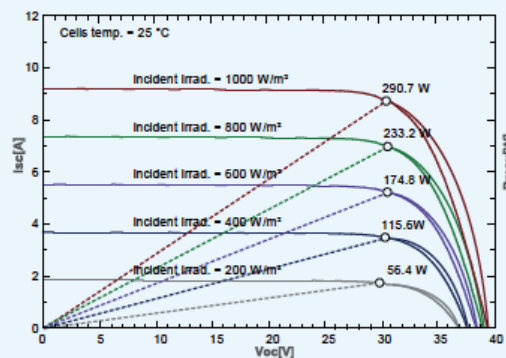
LINEAR WARRANTY

- No more than 3% peak power degradation in 1st Year
- No more than .7% peak power degradation in coming 24 years
- Free from defects of materials and workmanship for 10 years

DIMENSIONS



IV CURVES



CERTIFICATIONS



IEC/EN 61215:2005

cUL - 1703



t. 866.258.0110 w. hespv.ca
f. 866.437.5531 e. sales@hespv.ca